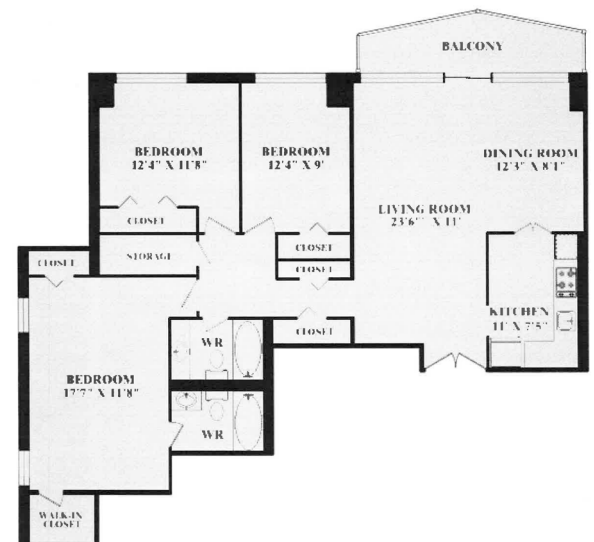




PARK WILLOW



3 BEDROOM UNITS #02, #11, #32, #39
1170 SQ.FT.

ACTUAL FLOOR COVERINGS MAY DIFFER FROM THOSE PRESENTED.
MEASUREMENTS HAVE NOT BEEN SITE VERIFIED
THEREFORE, SHOULD BE CONSIDERED APPROXIMATE.