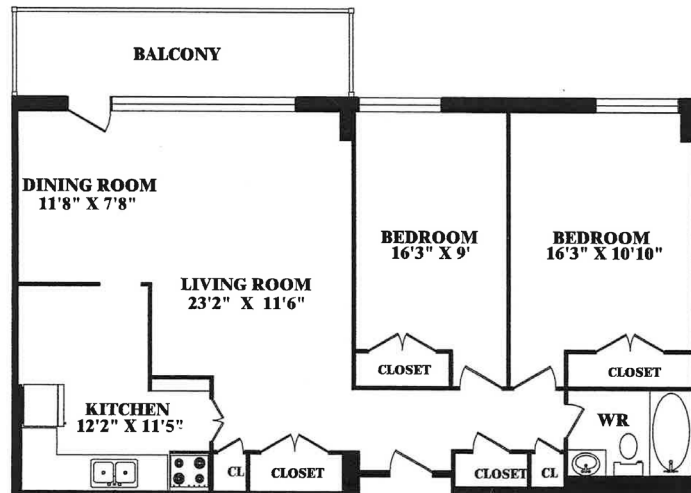




PARK WILLOW



2 BEDROOM UNIT #03, #06, #11, #15
893 SQ.FT.

ACTUAL FLOOR COVERINGS MAY DIFFER FROM THOSE PRESENTED.
MEASUREMENTS HAVE NOT BEEN SITE VERIFIED
THEREFORE, SHOULD BE CONSIDERED APPROXIMATE.