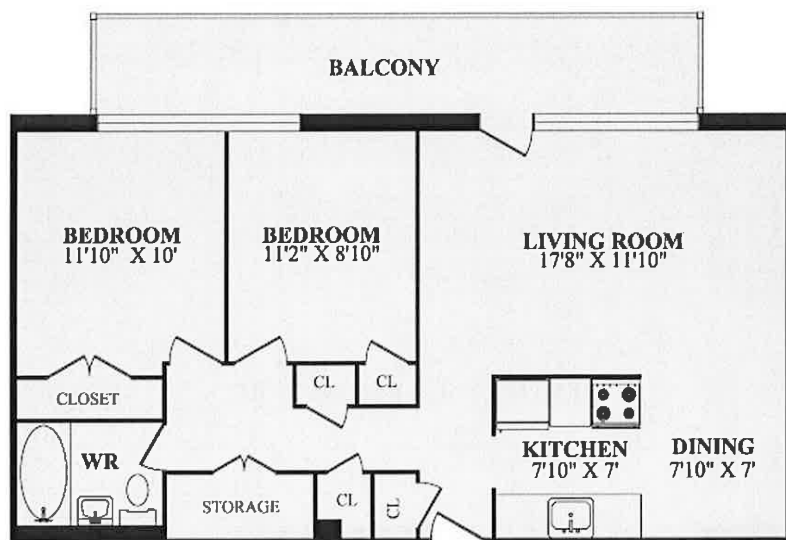




PARK WILLOW



**2 BEDROOM UNITS #03, #09
728 SQ.FT.**

ACTUAL FLOOR COVERINGS MAY DIFFER FROM THOSE PRESENTED.
MEASUREMENTS HAVE NOT BEEN SITE VERIFIED
THEREFORE, SHOULD BE CONSIDERED APPROXIMATE.