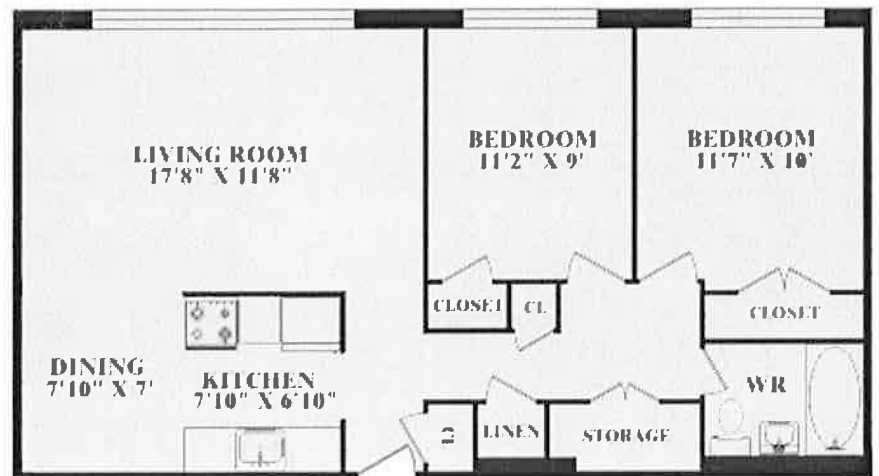




PARK WILLOW



**2 BEDROOM UNIT #04**  
**726 SQ.FT.**

ACTUAL FLOOR COVERINGS MAY DIFFER FROM THOSE PRESENTED.  
MEASUREMENTS HAVE NOT BEEN SITE VERIFIED  
THEREFORE, SHOULD BE CONSIDERED APPROXIMATE.